



PORT HOTELS
— MICE —



PORT HOTELS

M I C E

ELCHE



Elche is a town which offers much more than travellers expect. No other town in Spain has three assets registered in the different categories of UNESCO World Heritage, the Historic Palm Grove, the Elche Mystery Play and the Pusol Museum.

The wetlands of Elche are one of the most relevant reserves of this kind in the Autonomous Region of Valencia and one of the last vestiges of the numerous marshes which once existed on its coastline.

In addition to its great cultural wealth, Elche provides an excellent gastronomy, in which a wide variety of local products are used. A rich orchard and the proximity of the coast influenced the history of the local gastronomy.

Its culture, cuisine, fiestas, shopping and a wide range of leisure facilities make it a unique destination in the Mediterranean region.





"Our guests are welcomed as friends in our own home"

THE HOTEL

It is one of the most unique hotels in Europe, set right in the heart of the Elche Palm Grove, an exotic haven in the town featuring a space dominated by lush vegetation, with over 200 varieties of plants and 34,000 m² of gardens. A hotel complex with colonial style bungalows surrounded by nature and a versatile structure capable of hosting events for over 1,000 guests with state-of-the-art technological resources and chill-out zones.

Located just 10 minutes from Alicante International Airport, 15 from the A7 Mediterranean Motorway and 20 from Alicante with a frequent AVE high speed train service to Madrid, Valencia and Barcelona, Huerto del Cura is one of the favourite hotels on the Costa Blanca as an event venue.

The area has been declared a World Heritage Site by the UNESCO, and it boasts a pleasant climate which allows us to enjoy activities such as golf, sailing or scuba diving just a few minutes from the hotel.



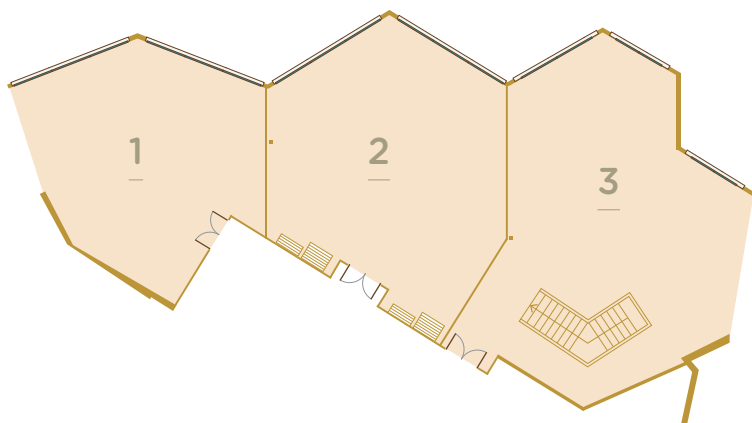


EVENTS AND MEETINGS







Events of all types and sizes. From private meetings in a room with views of the Palm Grove to congresses with 900 participants.

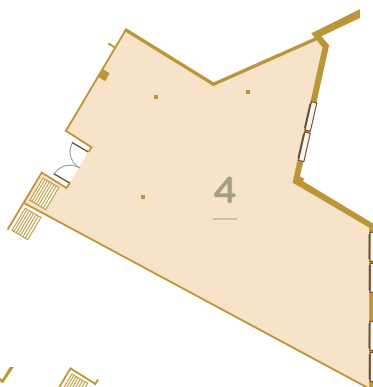






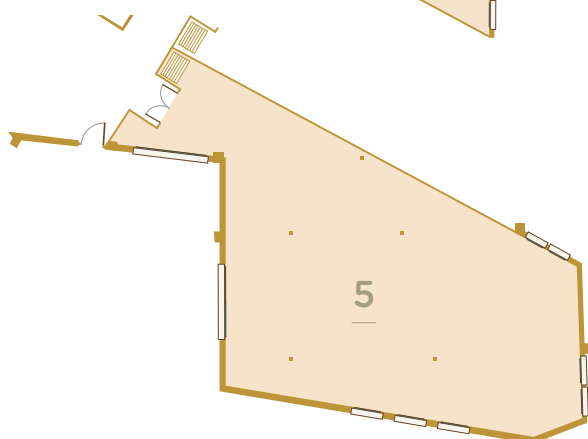
CANÓNICOS I, II, III

m ²						
60	50	70	30	28	28	70
91	80	80	95	50	35	130
91	80	80	50	50	35	80
242	240	250	120	-	-	270



CANÓNICOS IV

m ²						
178	120	150	80	40	50	150



CANÓNICOS V

m ²						
110	70	80	60	35	35	130



Banquet



Theatre



School



U Table

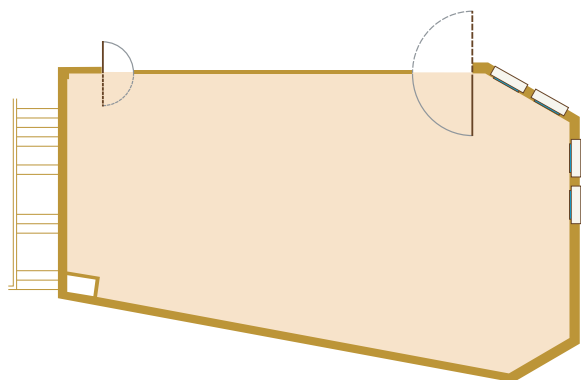


Imperial



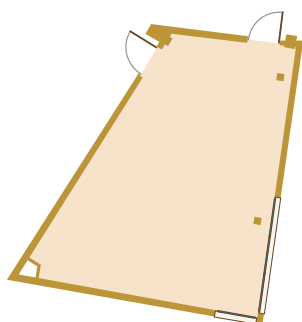
Cocktail





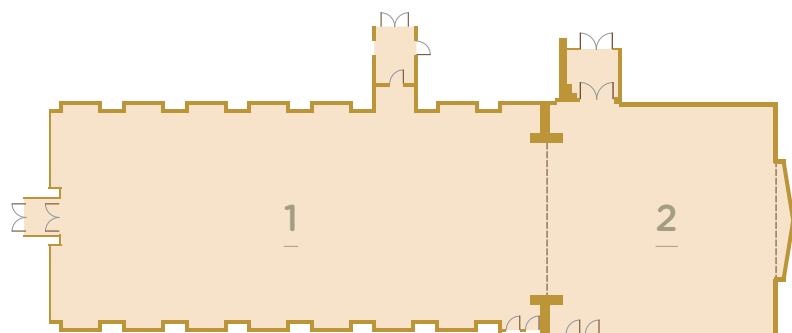
SACRISTÍA

m ²	☀	🪴	🪴	🪴	☀	🍷🍷
115	60	80	40	35	40	130



CAPILLA

m ²	☀	🪴	🪴	🪴	☀	🍷🍷
54	30	30	16	18	25	40



INVERNADERO I, II

m ²	☀	🪴	🪴	🪴	☀	🍷🍷
401	350	400	190	70	50	210
194	120	220	100	80	80	490
595	500	650	300	170	150	700





THE OASIS ROOMS

The rooms of Huerto del Cura invite us to daydream: colonial style furniture and décor surrounded by a tropical forest which we can see out of their large windows. There is no other oasis like this in mainland Spain.







ELS CAPELLANS, DEVOTION TO MEDITERRANEAN CUISINE

Els Capellans, the Hotel Huerto del Cura's gastronomic restaurant, is a space for creative cuisine where one can enjoy a menu with a focus on fresh market produce and a wine list with a selection of the best Spanish Designations of origin.

The Els Capellans dining room, intimate, elegant and with views of the pool and gardens, conceals sophisticated kitchens capable of catering for over 1,000 diners.



ZEN SPACE, A TREAT FOR YOU AND YOUR GUESTS

A fantastic Balinese massage cabin surrounded by gauze curtains is located next to the sauna and the Zen Space, in which the hotel offers you several treatment cabins and a large relaxation room. Because your work requires you to keep fit.





PORT JARDIN MILENIO



THE HOTEL

One of the most unique hotels in the province of Alicante, with a Q for Quality award, surrounded by gardens and just ten minutes from the town centre, the Hotel Jardín Milenio cohabits discreetly with the town in the heart of the Elche Palm Grove.

The hotel features 3 meeting rooms and different catering areas capable of hosting room events for up to 225 participants, with state-of-the-art technological resources and top quality cuisine for up to 300 people simultaneously.

Located just 10 minutes from Alicante International Airport, 15 from the A7 Mediterranean Motorway and 20 from Alicante with a frequent AVE high speed train service to Madrid, Valencia and Barcelona, The Hotel Jardín Milenio is a favourite 4 star event venue in south of the province of Alicante.

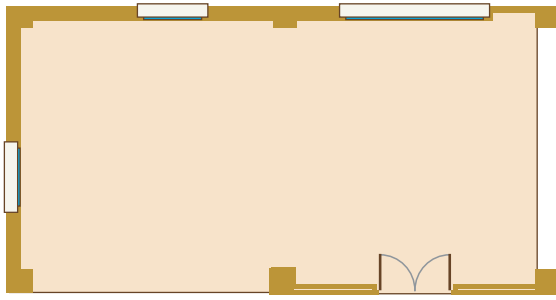


M I C E

EVENTS AND MEETINGS

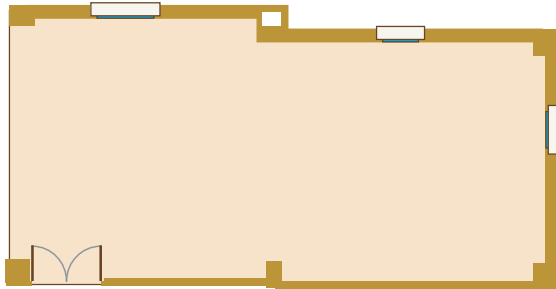
From private meetings in a room with windows opening onto the Palm Grove to multitudinous meetings in a main hall equipped with the latest audiovisual technology in an exceptional tropical setting.





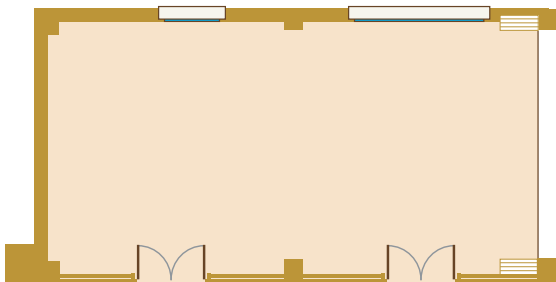
FÉNIX

m ²						
60	52	75	33	32	25	70



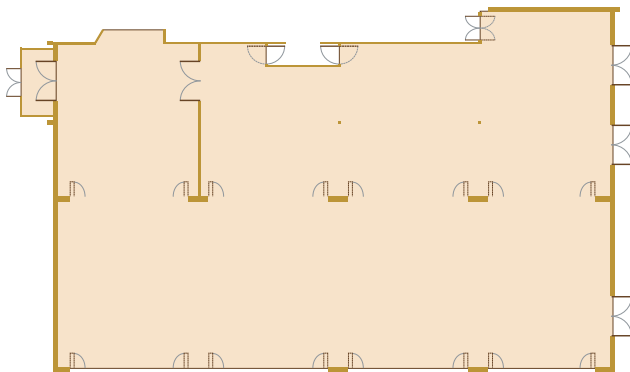
KENTIA

m ²						
60	52	75	33	32	25	70



ARECA

m ²						
60	50	75	33	32	25	70



LA TAULA

m ²						
300	160	200	130	80	60	225



Banquet



Theatre



School



U Table



Imperial



Cocktail



PORT JARDIN MILENIO



ROOMS IN THE PALM GROVE

The rooms of the Jardín Milenio are welcoming and functional; through their windows we can contemplate the surrounding Palm Grove.





LA TAULA, THE MEDITERRANEAN MARKET AND AUTHOR'S KITCHEN

In a framework of wide spaces and with views of the surrounding gardens and the Palm Grove through its glass wall, La Taula pays homage to author and market Mediterranean cuisine, with fresh produce from the Baix Vinalopó orchard, the port of Santa Pola and with a selection of the best Spanish meats. Wine list selected from different DO of the country, with a good presence of DO Alicante wines.



HEALTH

In our facilities you can enjoy sauna and massage room.





PORT ELCHE



EL HOTEL

The Hotel Port Elche is a modern establishment with 101 rooms situated in the “Elche Parque Empresarial” business park, where the most important companies in the province of Alicante are located.

Its location makes it ideal for business trips, tourism or as a stopping-off point en route, as it is just 3 km. from the Alicante-Elche Airport (ALC), the Trade Fair Centre (IFA), 5 Km. from Elche town centre and 12 Km. from the city of Alicante.








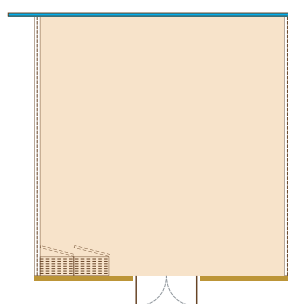
M I C E

EVENTOS Y REUNIONES

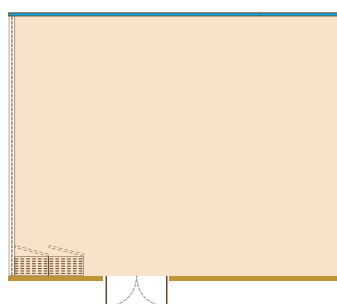
With different meeting and conference rooms offering seating capacity for up to 150 participants, the Hotel Port Elche, located in the Elche Parque Empresarial business park, has the added value of its close proximity to the companies and services of this modern industrial estate.



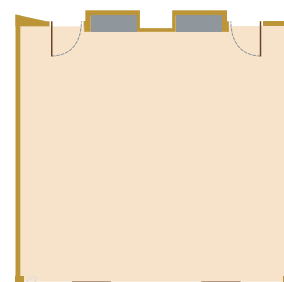
Salon	m ²	 Banquet	 Theatre	 School	 U Table	 Cocktail
Añil	52	35	30	27	21	40
Indigo	70	50	60	47	30	60
Aguamarina	50	-	30	27	21	-
Añil + Indigo	123	90	120	80	50	120



AÑIL



INDIGO



AGUAMARINA

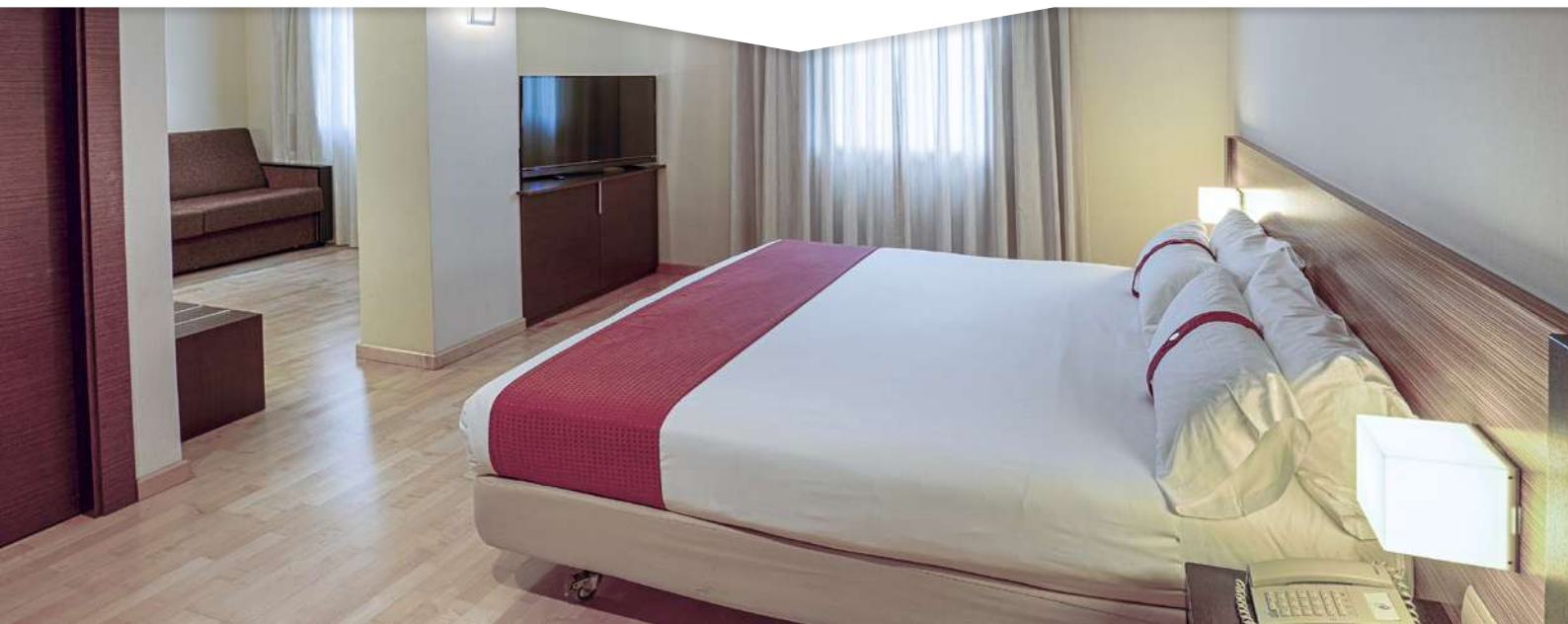


PORT ELCHE



BEDROOMS

Port Elche has 101 rooms designed to offer great comfort. Spacious rooms, well equipped and totally soundproof.



ALICANTE



A modern, cosmopolitan city like Alicante has a historic quarter, a typical spot and a haven of peace where time seems to have stood still and which holds surprising secrets. Clustered around the slopes of the Benacantil mountain, whose Castle of Santa Bárbara served it as protection, you will find a historic area where late Roman traces, the remains of Medieval walls and Modern Age streets have been discovered.

But here we should stop to contemplate the colorful, restored facades of many houses in the lower area with their old viewpoints. Cameras and videos should be at the ready to perpetuate spectacular panoramic views where, with the huge mass of the Benacantil as a





guardian and silent witness, you will discover quaint spots, facets and settings in which the traditional flavour of centuries-old houses contrasts with the skyscrapers of the city from which the noises of progress can just be heard as a murmur in the background.

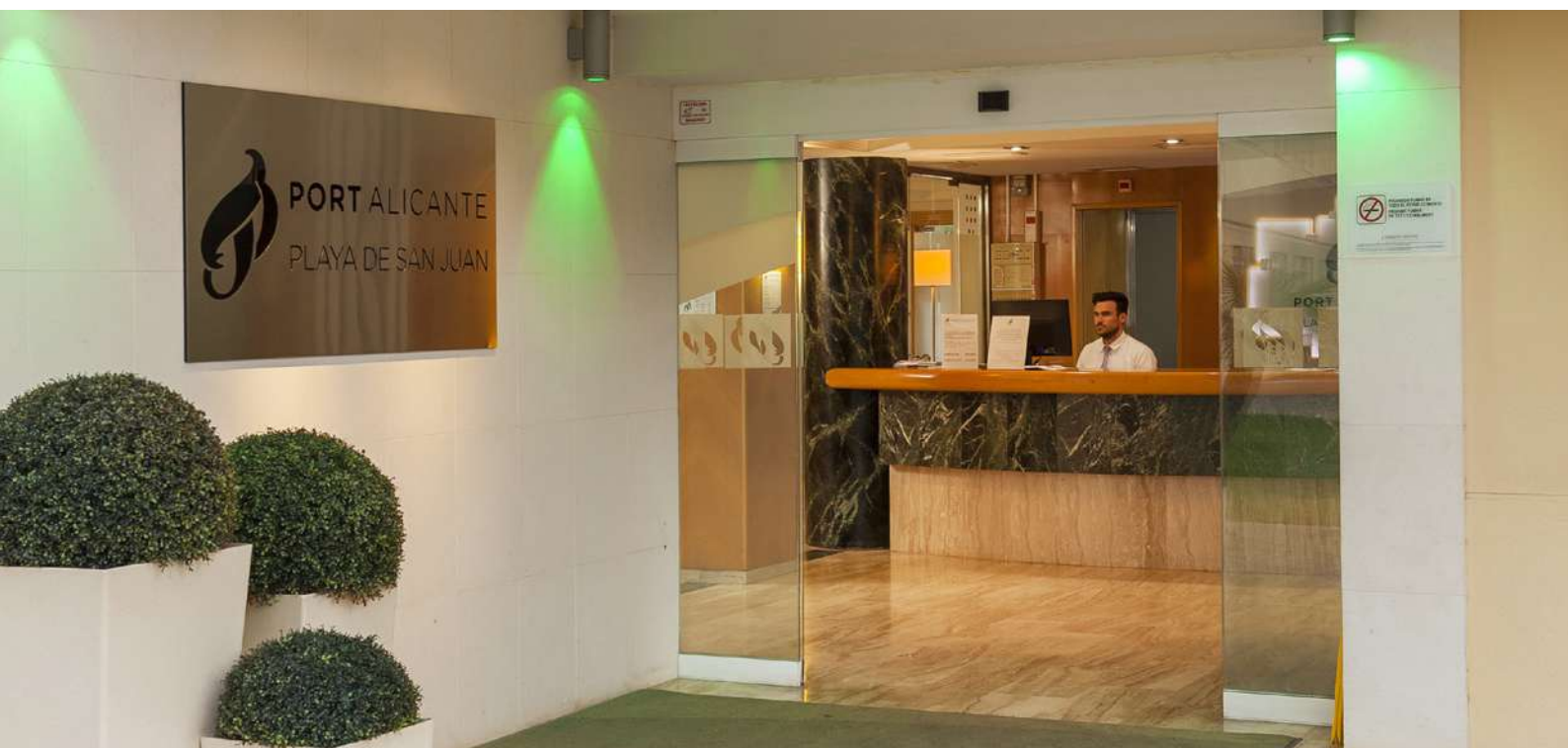
Beaches and coves of Alicante

Its splendid fifteen km stretch of coastline boasts superb beaches, most of which are flat and sandy, as only the Cabo de las Huertas is located on uneven terrain. The blue flag of the European Union which flies on almost all of them is a guarantee of cleanliness, quality of the water and optimum services.





PORT ALICANTE PLAYA DE SAN JUAN



THE HOTEL

Located just 600 m from Playa de San Juan in a quiet spot only 15 minutes from the centre of Alicante.

An area in which to enjoy the sea, the sand and the complementary leisure amenities to the full, with the countless shopping, gastronomic, cultural and entertainment facilities offered by a modern, dynamic city like Alicante.



M I C E






EVENTS AND MEETINGS

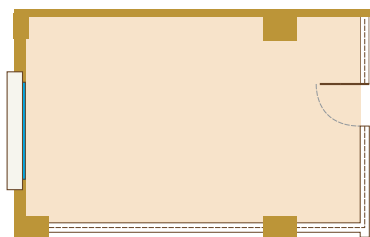
Port Alicante Playa de San Juan is a comfortable hotel, ideal for holding events in areas adapted to every need to ensure that your work meetings are as productive and successful as expected.

The hotel has air-conditioned meeting rooms with natural light. Spaces which can be easily divided with panels, equipped with adjustable lighting to adapt to each requirement.

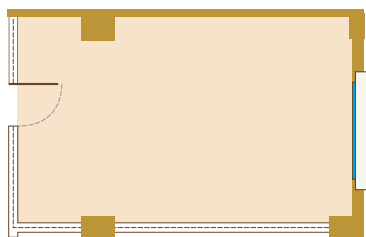
Your company lunches or dinners, work menus, coffee breaks, etc, will be a success in the hotel itself, with personalised service stamped with our hallmark: quality and excellence.



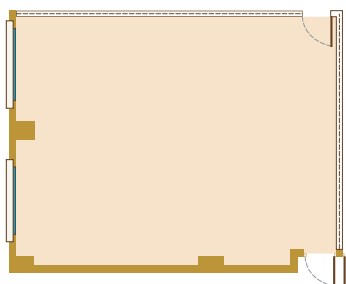
Salon	m ²	 Banquet	 Theatre	 School	 U Table	 Cocktail
Cancún	28	14	20	12	14	18
Cozumel	30	14	20	12	14	18
Cancún + Cozumel	58	30	35	24	20	36
Acapulco	66	50	60	42	25	50
Vallarta	66	50	60	42	25	50
Acapulco + Vallarta	132	90	130	90	40	130
Los cabos	59	30	35	24	20	36
Planta	285	220	200	140	-	280
Palenque	133	90	96	77	51	115
Tulum	80	50	48	33	33	60
Palenque + Tulum	214	150	160	90	84	175



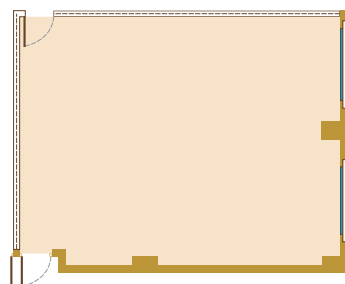
CANCÚN



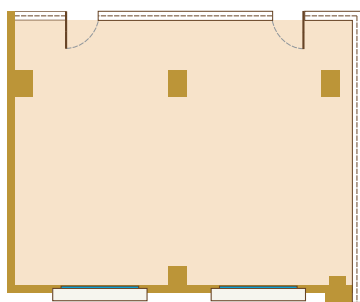
COZUMEL



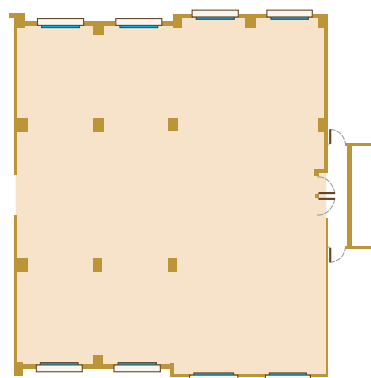
ACAPULCO



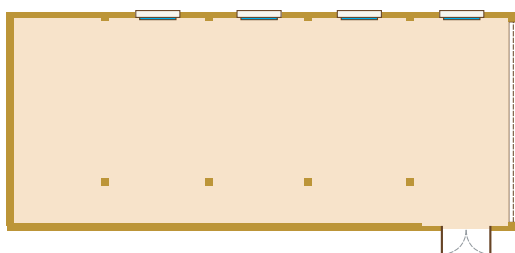
VALLARTA



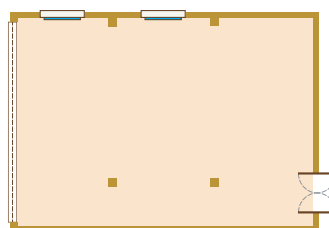
LOS CABOS



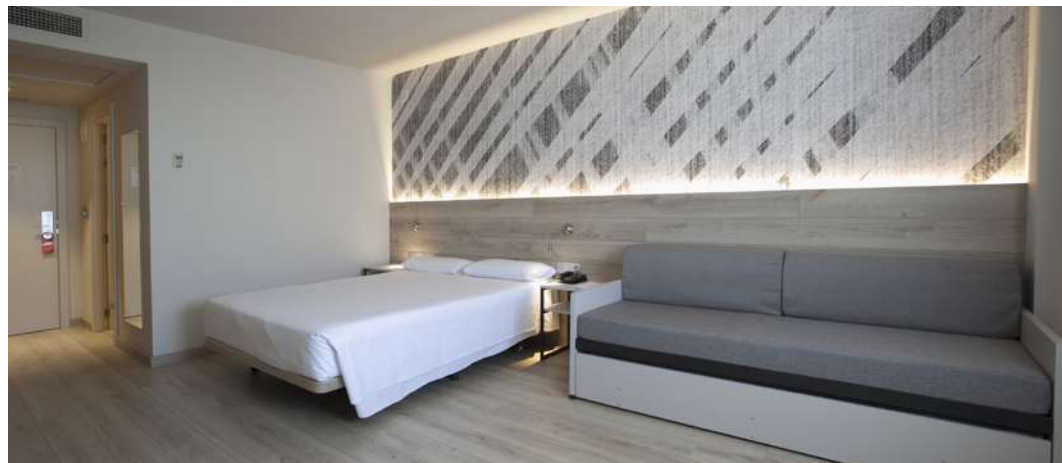
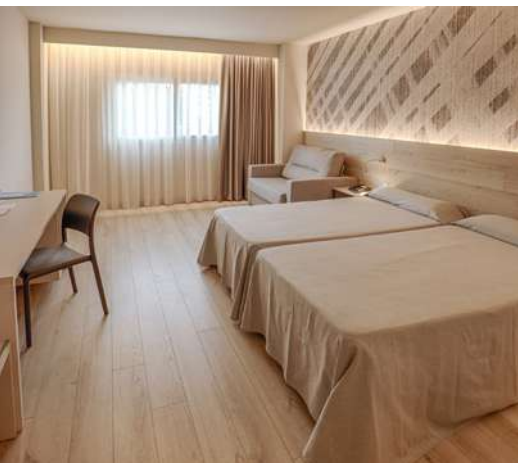
PLANTA



PALENQUE



TULUM



BEDROOMS

The hotel has 126 comfortable, spacious rooms to enjoy a perfect rest.



OTHER SPACES

At Port Alicante we find time for a few moments of relaxation: gymnasium, sauna and paddle tennis courts are an ideal complement to relieve stress.



PORT HOTELS

C/ Estocolmo, 4 - 03503 Benidorm
(+34) 966 803 232
reservas@porthotels.es

www.porthotels.es